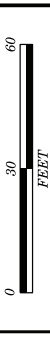
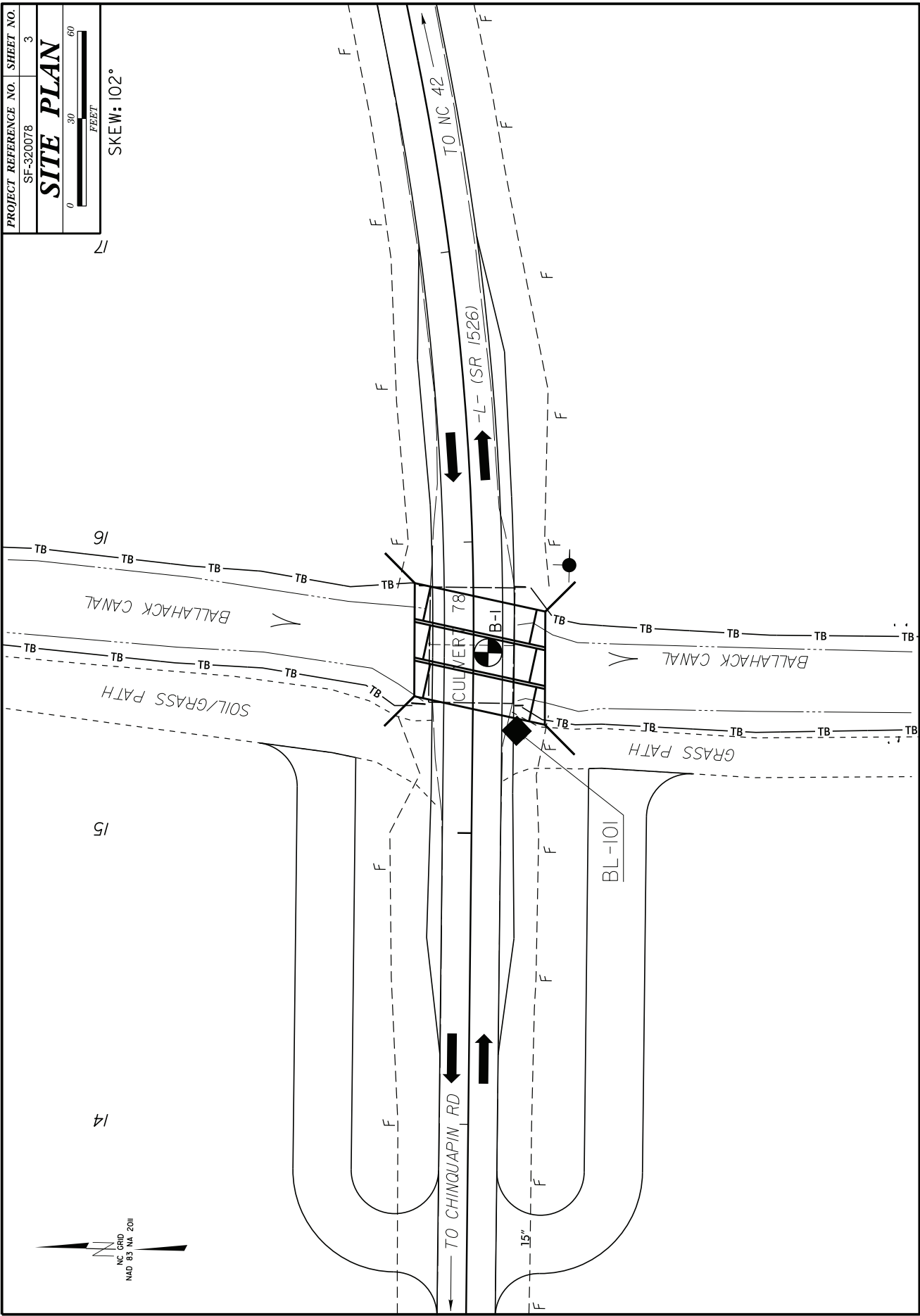


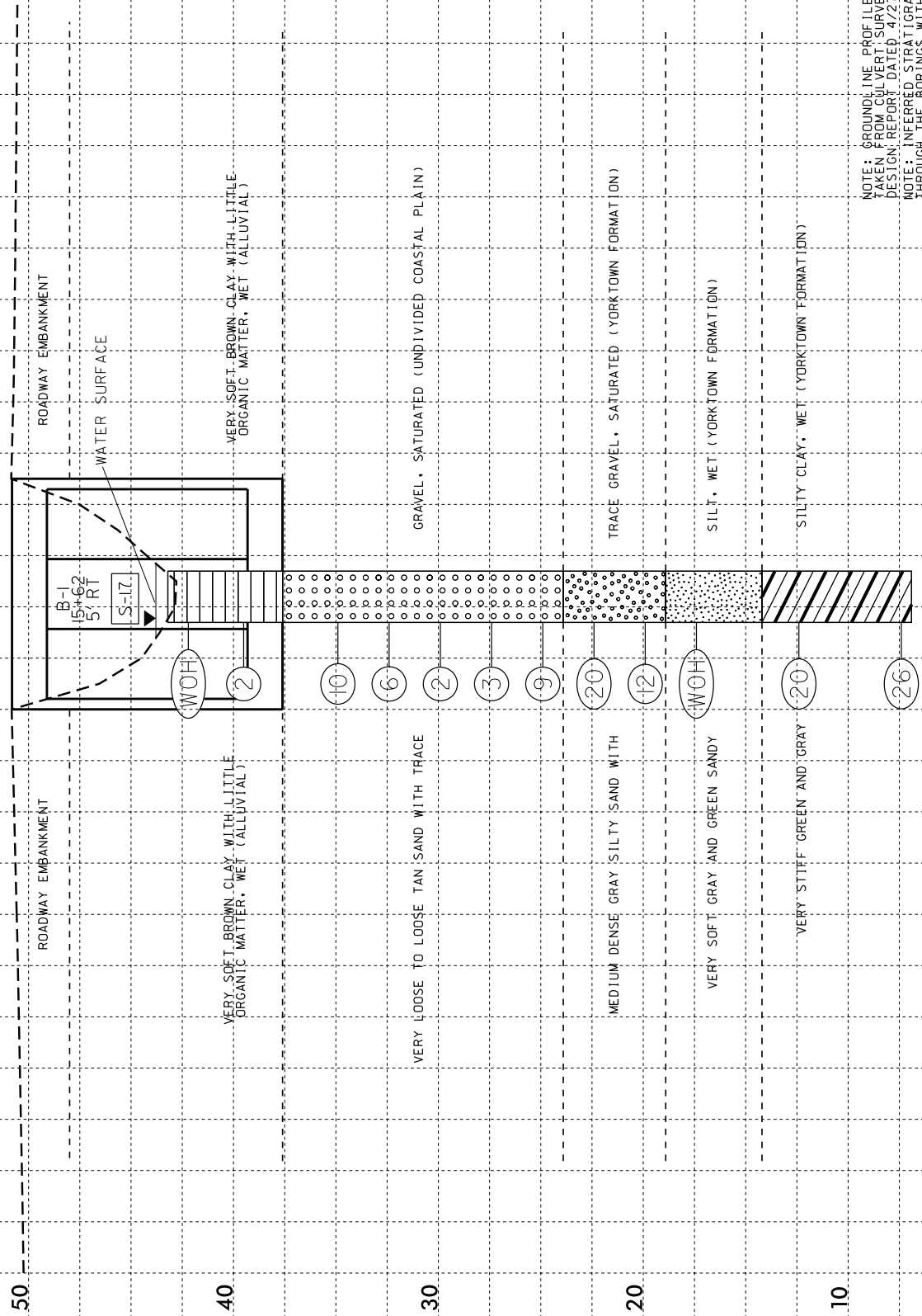
PROJECT REFERENCE NO. SF-320078 SHEET NO. 3

SITE PLAN



SKEW: 102°





V.E. = 4'

NOTE: GROUNDLINE PROFILE ALONG L-TAKEN FROM CUL-VERT SURVEY AND HYDRAULIC DESIGN REPORT DATED 4/27/21
 NOTE: INFERRED STRATIGRAPHY IS DRAWN THROUGH THE BORINGS WITH BOTH PROJECTED ONTO THE PROFILE

GEOTECHNICAL BORING REPORT BORE LOG

WBS	17BP-1 PE-98	TIP	SF-320078	COUNTY	EDGECOMBE	GEOLOGIST	Jones, A. N.
SITE DESCRIPTION		Culvert No. 78 on -L- (SR 1526) over Ballahaek Canal				GROUND WTR (ft)	
BORING NO.	B-1	STATION	15+62	OFFSET	5 ft RT	ALIGNMENT	-L-
COLLAR ELEV.	43.2 ft	TOTAL DEPTH	36.3 ft	NORTHING	773.181	EASTING	2,461,076
DRILLER		Pinter, D. G.		START DATE		05/11/21	
DRILL METHOD		Wash/Boring		SURFACE WATER DEPTH		1.4ft	
DRILLER		Pinter, D. G.		START DATE		05/11/21	
ELEV (ft)		BLOW COUNT		BLOWS PER FOOT		SAMP. NO.	
45		0.0		0		100	
40		2.7		1		SS-1	
35		7.3		3			
30		12.3		3			
25		17.3		4			
20		22.3		5			
15		27.3		6			
10		32.3		8			
		37.3		10			
		42.3		12			
		47.3		14			

ELEV (ft)	SOIL AND ROCK DESCRIPTION	DEPTH (ft)
43.2	WATER SURFACE (05/11/21)	0.0
43.2	ALLUVIAL GROUND SURFACE	0.0
37.6	BROWN CLAY WITH LITTLE ORGANIC MATTER, WET	5.6
23.9	UNDIVIDED COASTAL PLAIN TAN SAND WITH TRACE GRAVEL, SATURATED (UNDIVIDED COASTAL PLAIN)	13.3
19.9	COASTAL PLAIN TRACE GRAY SATURATED (YORKTOWN FORMATION)	24.3
14.2	COASTAL PLAIN GRAY AND GREEN SANDY SILTY, WET	29.0
6.9	COASTAL PLAIN GREEN AND GRAY SILTY CLAY, WET	36.3

Boring terminated at Elevation 6.9 ft in Very Stiff Clay